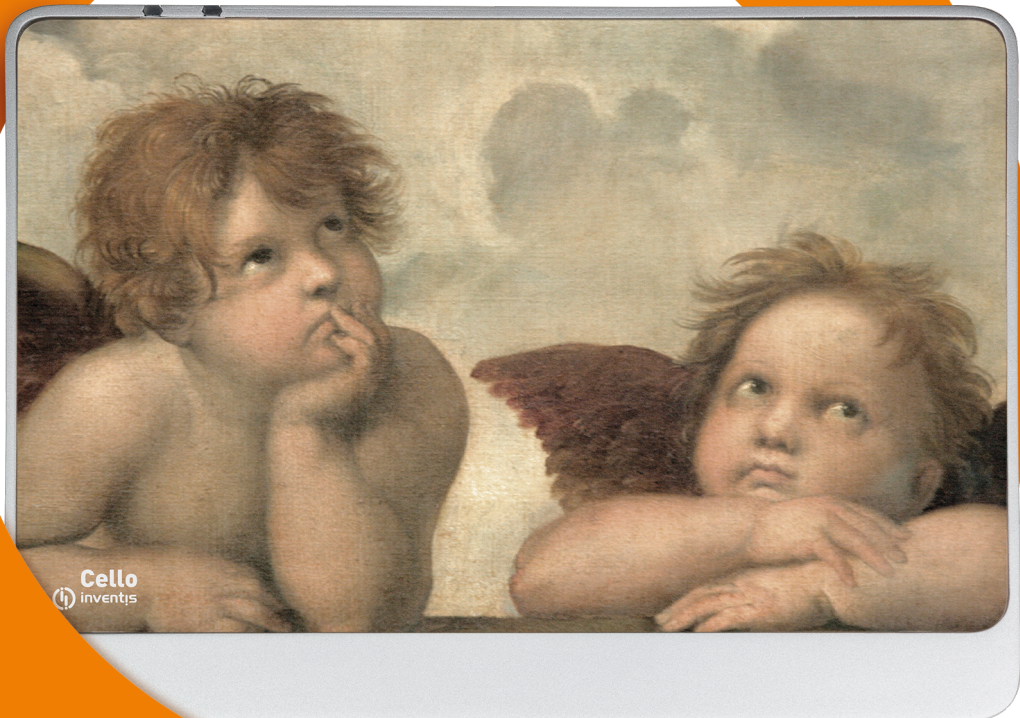


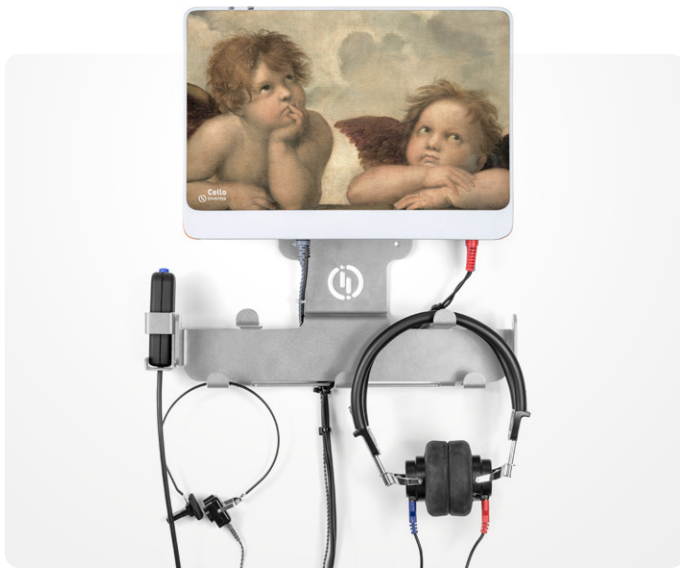
# Cello

Diagnostic Audiometer



**Orchestral perfection**  
A full line of Audiology Equipment

- Pure tone and speech audiometry in AC, BC, FF
- Video VRA option available
- High-frequency audiometry (optional)
- Wall-mounting option and dedicated transducers support available



Cello on its optional wall hanger.

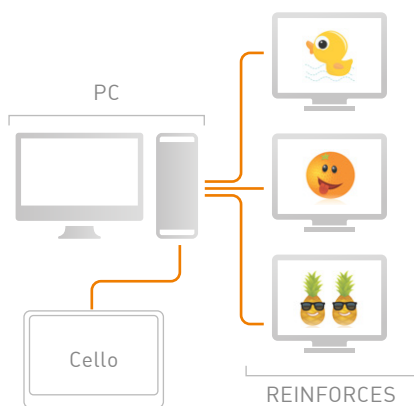
\_\_\_ Cello is a PC or iPad® controlled diagnostic audiometer, capable of performing fast and accurate air, bone and speech audiometry exams, as well as several additional tests including QuickSIN™, HF audiometry, and video-VRA. With its revolutionary design, complete feature set and top reliability, Cello is a little masterpiece, ideal for anyone unwilling to compromise on appearance and user experience.

**AVAILABLE TESTS**

Besides the standard audiometry exams, Cello also performs Hughson-Westlake automated audiometry, high-frequency pure tone exam, speech audiometry, QuickSIN®, SISI, Stenger and includes a 2 channel Master Hearing Aid.

**VIDEO-VRA**

With Cello, in few minutes you can also build a video-VRA system with unlimited possibilities for customizing the images and videos used as reinforces. Everything is controlled through the Maestro module, simply connect up to three displays to your computer to provide the reinforces.



**COMPUTER & IPAD® CONTROL**

Connect Cello to the USB port of your Windows® computer and you are ready to go: no driver and no additional cable required. You can control Cello through the Maestro's amazingly user-friendly interface, available also for Noah.

The Aero option lets you also control Cello directly from your iPad® over a Bluetooth connection, using the Maestro App.

**TECHNICAL DATA**

**AUDIOMETRY**

- Intensity: ..... AC: -10 to 120 dB HL  
BC: -10 to 80 dB HL
- Freq. range: ..... 125-8000 Hz  
8-20 kHz (opt.)
- Input: ..... Tone, warble tone, EXT1, EXT2, USB audio, mic
- Masking: ..... NBN, WN, SN
- Output: ..... AC L+R, insert L+R, BC, FF L+R,  
insert masking, HF L+R
- Talk over: ..... External microphone or computer
- Monitor: ..... External earphone/speaker or computer
- Test battery: ..... PTA (HL and UCL), speech audiometry (WRS, SRT,  
MCL, and UCL), autothreshold, SISI, Stenger,  
Master Hearing Aid, QuickSIN™ (opt.),  
High Frequency (opt.), video-VRA (opt.)

**DEVICE SPECIFICATIONS**

- Conn. to PC: ..... USB
- Compatible sw: ..... Inventis Maestro (stand-alone or Noah module)
- Conn. to iPad®: ..... Bluetooth 4 (requires Aero option)
- Controlling App: .... Maestro
- Dimensions: ..... 30,8 x 21,7 x 6,4 cm  
12.1 x 8.5 x 2.5 in. [DxWxH]
- Weight: ..... 1.60 kg / 3.53 lbs

Find our distributors at:  
[www.inventis.it/dealers](http://www.inventis.it/dealers)

Discover the complete orchestra at: [www.inventis.it](http://www.inventis.it)

